

Use case #1: Domestic Medical Device

System definition

The Ankle Monitor Predictor of Stroke (AMPS)

AMPS is a fictional home use medical device worn at night (or when resting) by patients considered at risk for a stroke. The AMPS system gathers medical readings that can be later analyzed by a medical professional. While the system can help predict a patient's risk of experiencing a stroke, it does not alert – and is not intended to alert – if a stroke is imminent or occurring

- *Period of expected use: One to three months*
- *Medical capability: Diagnostic only*
- *Device invasiveness: Low (easily removable, like a wristwatch)*

Scenario

Alice has been informed by her doctor, based on her family history and several other risk factors, that she is at increased risk of experiencing a stroke. To gain further insight and determine a treatment plan, her doctor has instructed her to take the **AMPS system** home and wear it when she sleeps to take readings. She is also directed to install a **companion app on her phone** that will connect to the AMPS system (via Bluetooth Low Energy) and upload the readings every day to **the AMPS cloud service**, where they will be analyzed by an automated algorithm. Alice's doctor will check the results after the first week to identify any immediate causes of concern, and they will schedule a follow-up consult in two months

Use case #1: Domestic Medical Device

System definition

AMPS Device

AMPS is a health monitoring system worn on a patient's ankle when they are resting. It has the following specifications and capabilities:

- On/off switch
- Physical Bluetooth pairing button
- Proprietary stroke-predicting sensor.
- Heart rate monitor
- Body temperature sensor
- Bluetooth Low Energy (BLE) connectivity
- Onboard computer and flash storage that can store up to two weeks of patient data for later transmission

AMPS Cloud Service

The AMPSCS is a collection of virtual machines hosted in a cloud infrastructure. It consists of the following functionality:

- An application gateway server to inspect and limit traffic going into the AMPSCS systems
- A set of backend services that perform analysis of the patient data
- A collection of patient-facing services that communicate with the patient app, provide a web portal for patients to register their AMPS device, and authorize clinicians to view their data
- A collection of health delivery organization (HDO)-facing services that provide a web portal for clinicians to create an account and access a patient's data
 - Clinicians' access to the portal using a web browser.
 - Authentication is provided via username and password.
 - Clinician service identifiers that clinicians can provide to patients so the patients can authorize them through the app.
 - The clinicians can view a summary of the patient's raw data and the analysis performed by the AMPSCS backend algorithms.
 - The ability for clinicians to download a patient's data via an encrypted zip file.

[13]

Use case #1: Domestic Medical Device

System definition

AMPS Patient App

There are two different versions of the patient app, one for Apple iOS, and another for Android devices. Both apps contain the following functionality:

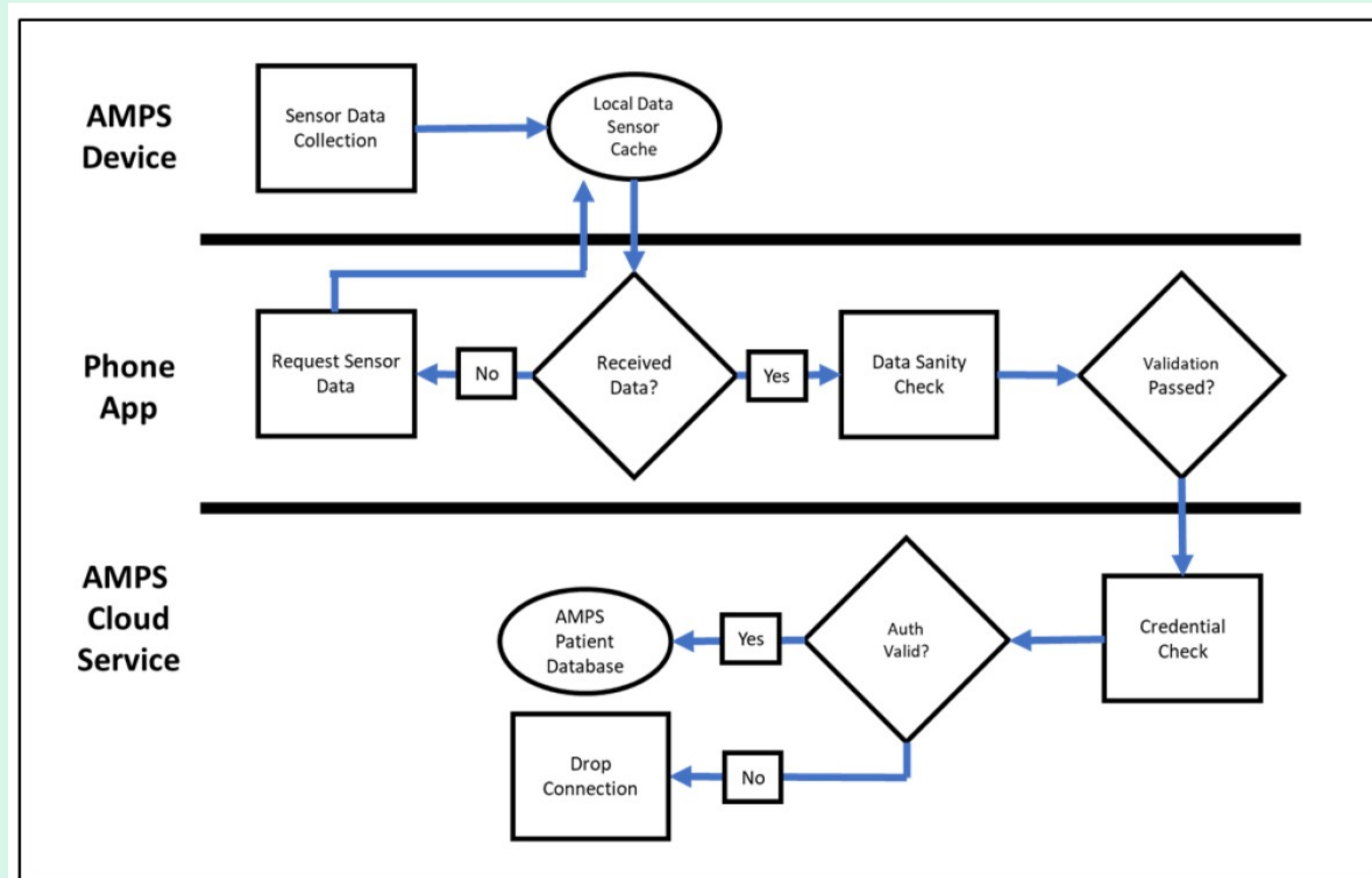
- It can pair with the AMPS device via Bluetooth.
- It contains an interface for a patient to create an account with the AMPS cloud services, register an AMPS device, and authorize clinicians to view their data.
- If the patient gives permission to the app, it will automatically connect to the AMPS device once a day and upload readings to the AMPSCS. If the patient does not give it permission, the app will store the data retrieved from the AMPS device until a manual upload is initiated. The amount of data transferred per upload is typically less than 1 megabyte a day.
- The app will display status information to the patient, including the last time the app synced with the AMPSCS, a log of the days the app was able to pull data from the AMPS device, and a log listing if the AMPS device was successfully collecting data.
- There is a device management screen that primarily focuses on diagnosing Bluetooth connection problems, and common issues that may prevent the AMPS device from collecting data. In addition:
 - The app can wipe patient data from the AMPS device.
 - The app can check for and update the firmware of the AMPS device with new versions.
 - The app can revert the AMPS device to factory default settings.
- If the device does not successfully sync to the cloud services once every 24 hours, an in-app notice will appear directing the patient to sync their data. After 72 hours have elapsed since a successful sync, the patient will be emailed an automatic reminder.

[13]

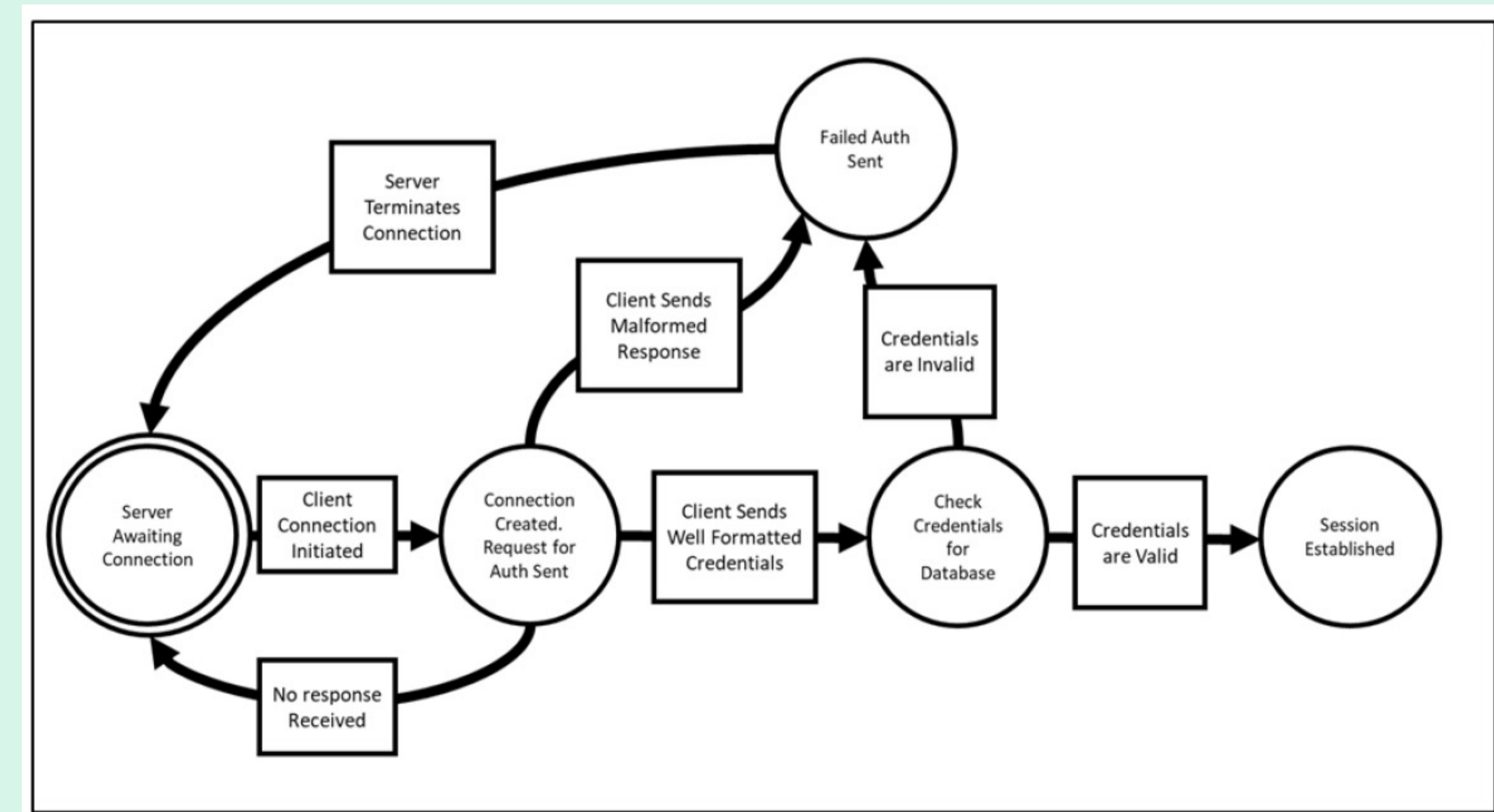
Use case #1: Domestic Medical Device

System definition

Supporting information



[1
3]



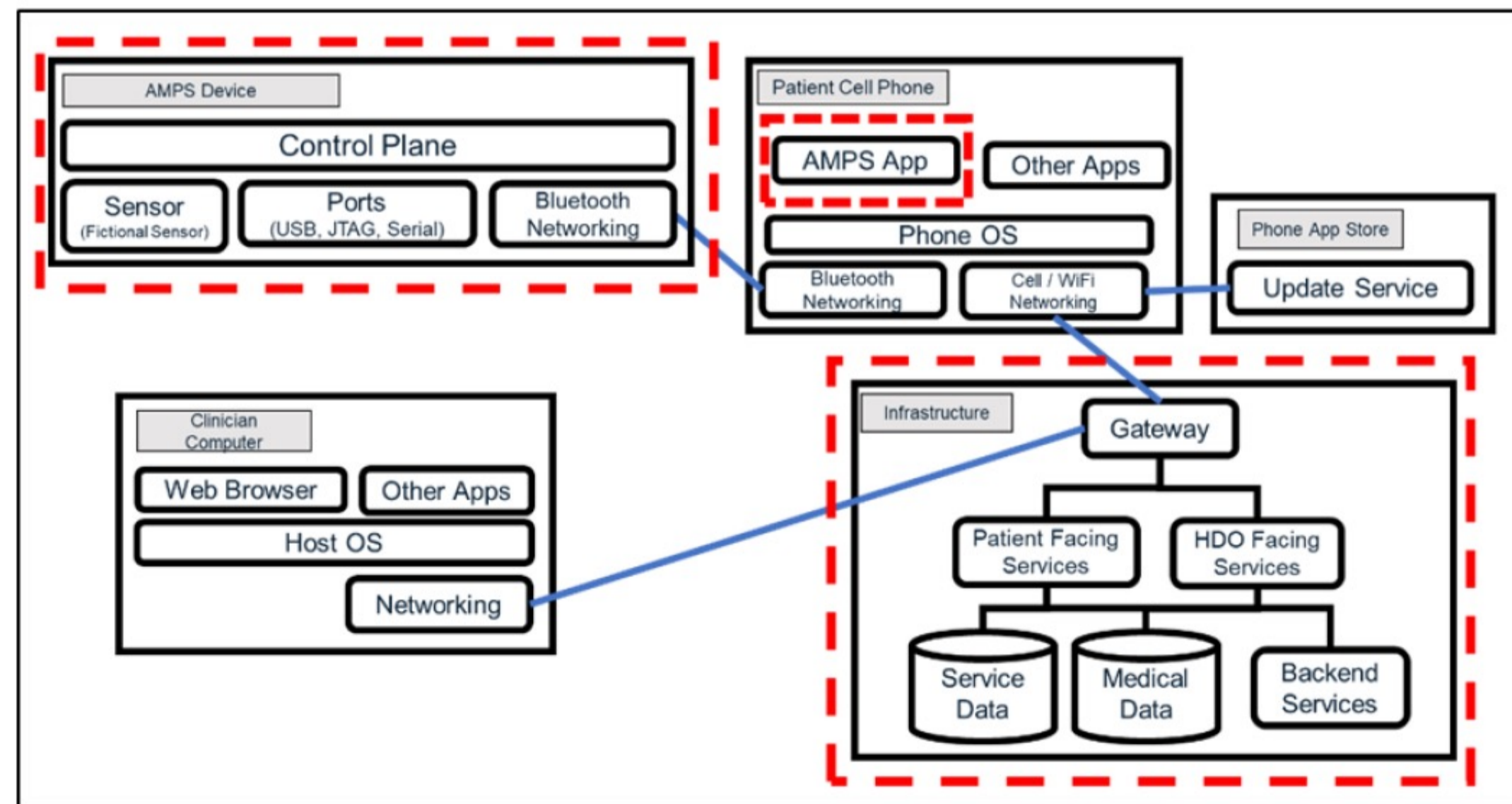
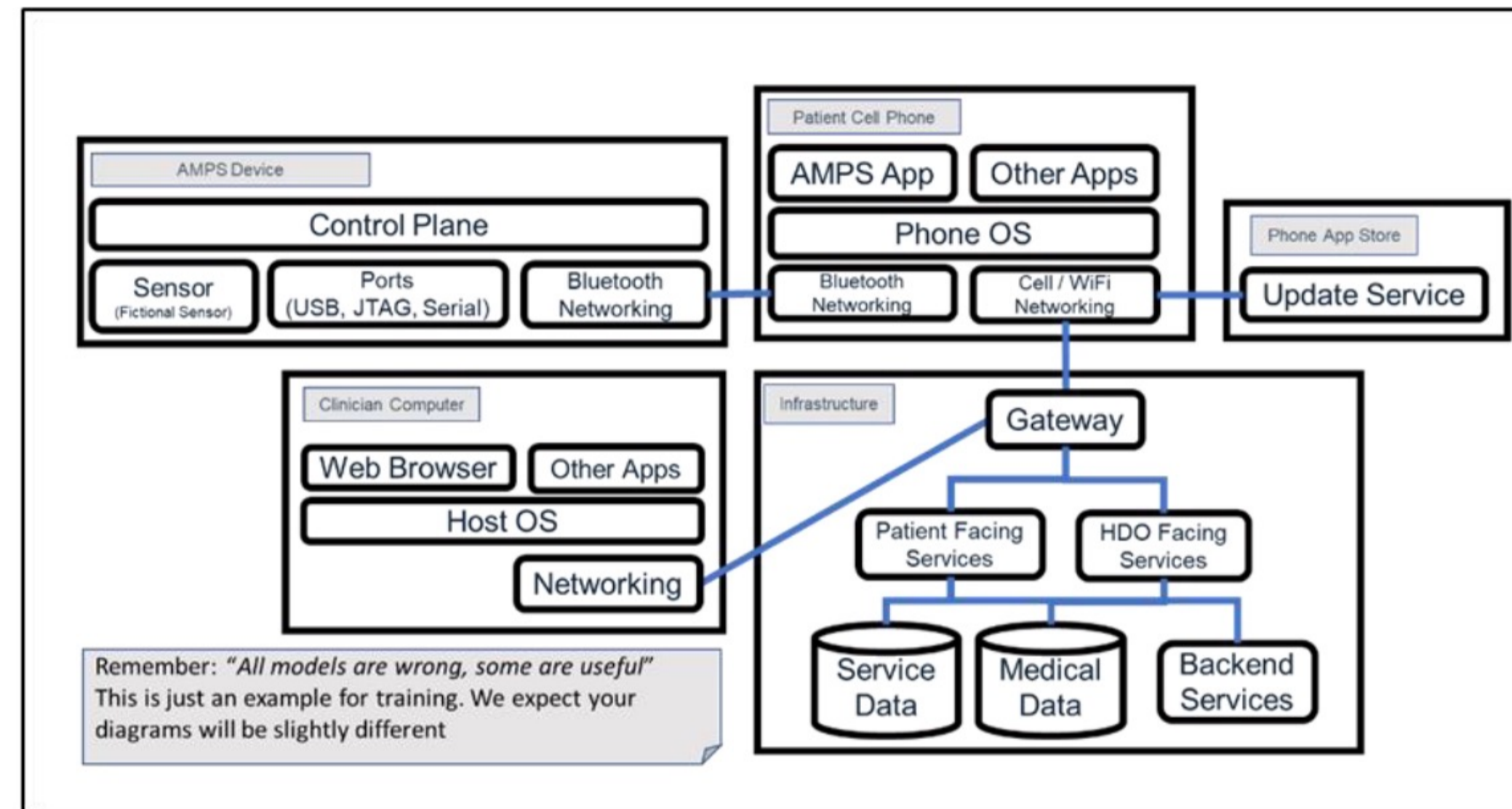
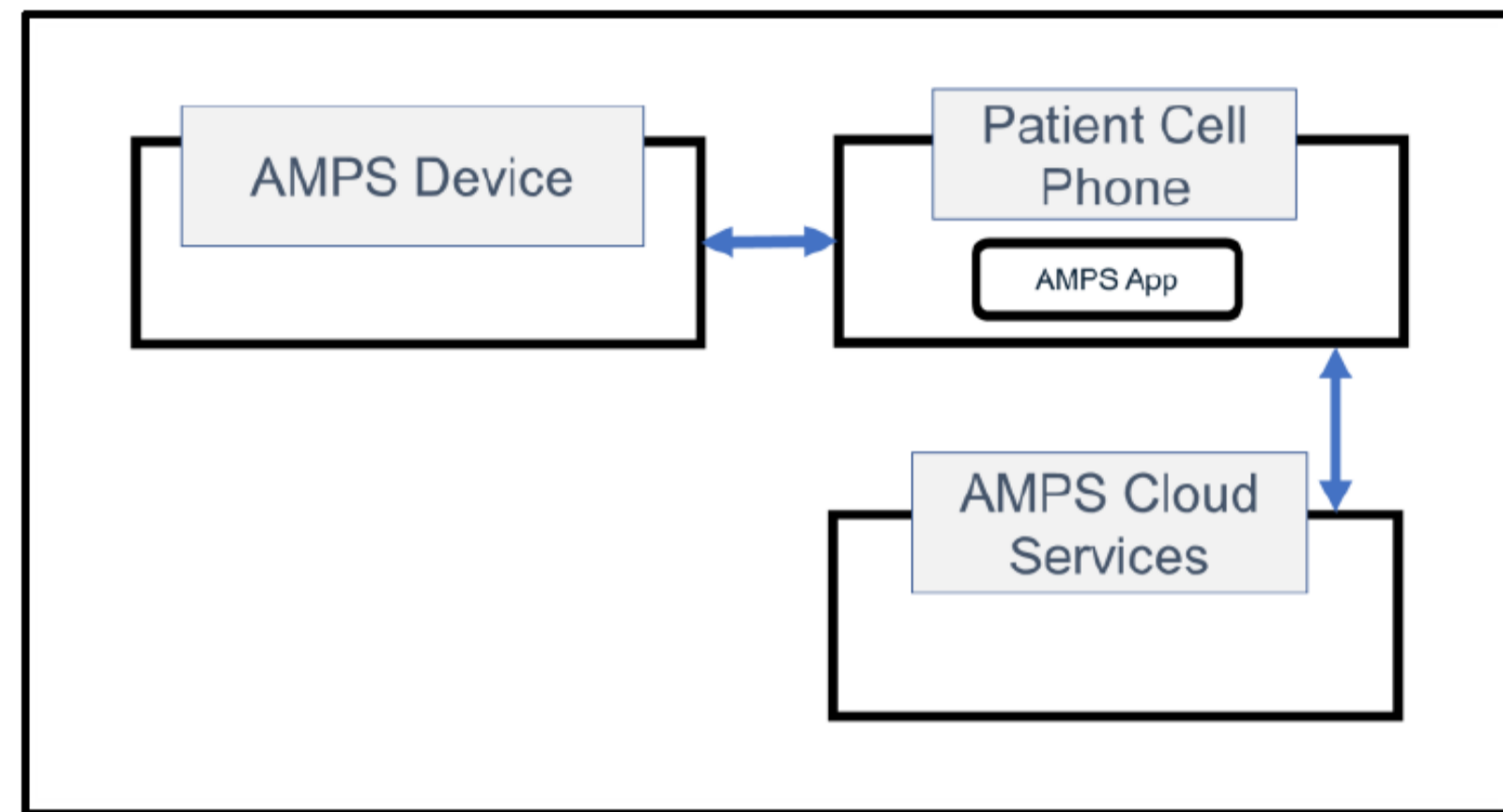
Use case #1: Domestic Medical Device

Exercise 1 – Data Flow Diagram

Draw the data flow diagram from Domestic Medical Device defined on previous slides, incl. system parts, communication flows and trust boundaries

Use case #1: Domestic Medical Device

Data Flow Diagram



[1
3]

